

Karsten Weise,
MSc, Dipl. Ing.(FH), CEng MICE
Managing Director

About Karsten

Karsten started working as a structural engineer in the UK over 15 years ago, initially working at Atkins and more recently as a Director at Fluid Structures. He is a Chartered Structural Engineer (Member of the ICE) with key experience in new-build, extension and refurbishment building projects. He is very experienced working on retaining structures in infrastructure and residential projects.

He specialised in refurbishment of buildings and concrete design at university, and has since then been fascinated by the unique challenges different materials and construction techniques present. His key experience is in the design and construction methods associated with steel and reinforced concrete structures.

During his time at Atkins he worked on a number of large infrastructure projects working with European and American standards. He worked on the majority of these projects from scheme to construction and enjoyed the challenges of the construction process and the detailed design.

He lectured Concrete Design to Eurocode 2 at the University of East London (UEL) between 2009 and 2014 and gained an invaluable insight into the academic world, enabling him to assess the technical and non-technical performance of students, graduates, and professionals alike.

During his time at Fluid structures he enjoyed the design lead approach and the broad range of projects from staircases to large residential and commercial schemes.

Professional Qualification

2011 – Chartered with MICE

Education (2001-2007 at Leipzig University of Applied Sciences)

2007 – MSc Civil Engineering

2006 – Dipl. Ing. (FH), MEng (German Equivalent)

Personal Experience in Mayor Projects with emphasis of Below Ground Construction



Various residential – Basements in London
Structural lead for the design for various single and double story basements in and around London for new built and refurbishment projects. Experience building in London clay, sand and gravel and chalk.

Status: Constructed or in progress
Picture: Basement refurbishment Logan place
Managing Director at Structures Lab



DIT Academic Hub - Project cost: approx. 200 Mill
Project Director leading the design of a new library complex for the Dublin Institute of Technology. The project involved the design of three new build phases, including the integration of a grade 2 listed building at its heart.

Status: Finished RIBA STAGE 3.
Architecture: O'Donnell & Tuomey



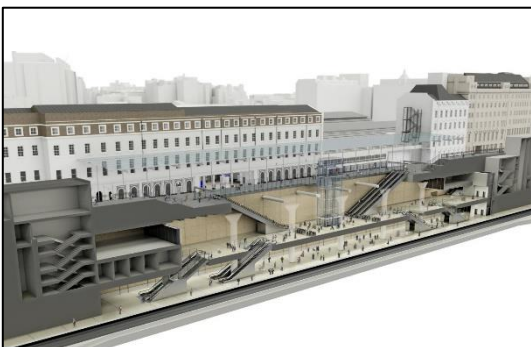
Lancer Square – Project cost – 200 Mill
Project Director leading the design of 13,600 sqm mixed-use scheme comprising four blocks ranging from four to seven storeys. One office block in steel work and 3 residential blocks in concrete. The main site accommodating 3 of the blocks contains a double story basement and swimming pool at B2 level.

Status: Constructed
Structural Director at Fluid structures



Doha Gold Line – Project Value £2.2 billion
Structural lead for the design of ten underground stations in Qatar. Based on site for 6 month and leading the design team in the UK for one year until completion of the design work.

Status: Constructed
Associate Structural Engineer at Atkins Limited
Picture: Al Sadd Station box during construction



Cat 3 check for Padding– Project Value 150Mill
Structural lead and Project manager for design CAT 3 check, for the Stage F design changes on Cross Rails Paddington Station box. Design of reinforced concrete to EC2; Design Software used: Robot.

Status: Constructed
Category 3 checking engineer at Atkins Limited
Picture: Padding station box